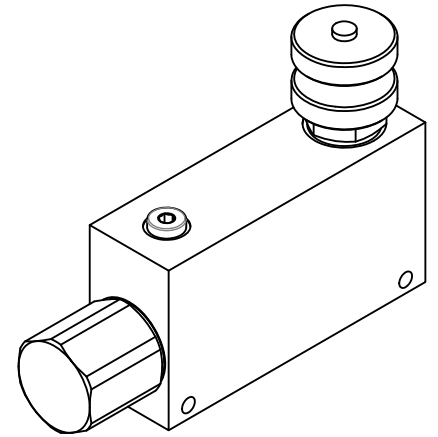
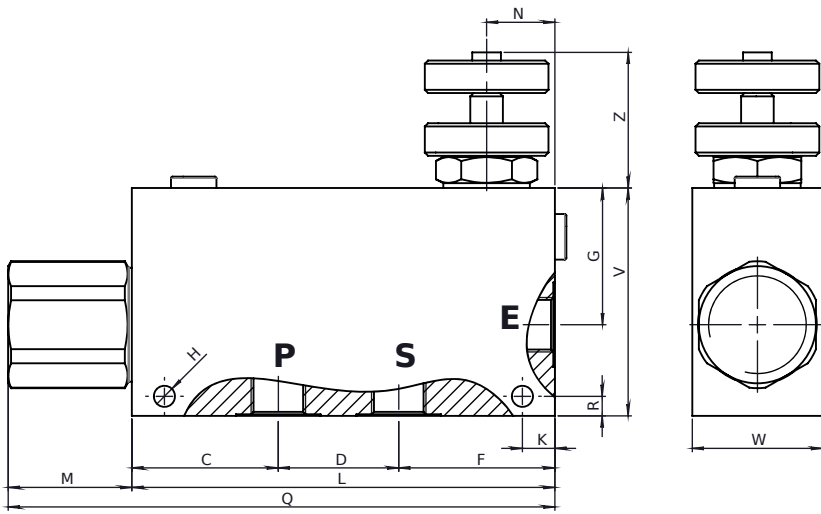
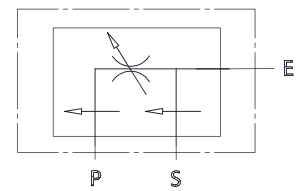


Dimensions



Hydraulic Symbol

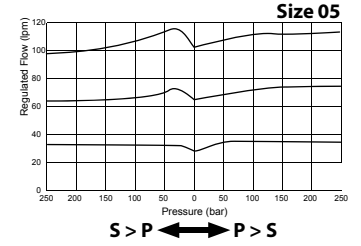
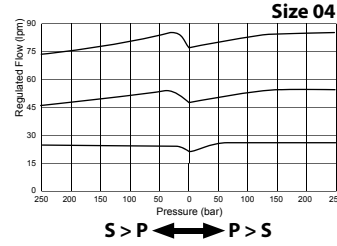
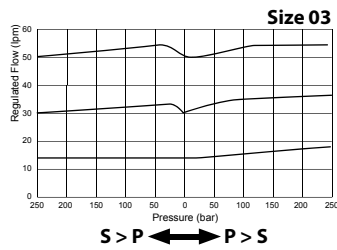
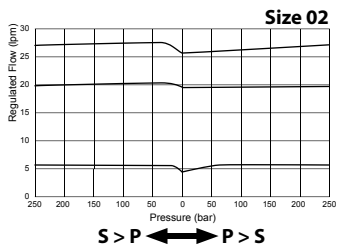


Features

Size	02	03	04	05
Max Pressure (bar)	260	260	260	260
Max Inlet Flow (lpm)	50	85	150	190
Max Adjustment Flow (lpm)	40	60	90	120

Size	E-P-S BSP	C	D	F	G	H	K	L	M	N	R	Q	V	W	Z	Weight kg
02	3/8	48	37	45	42	8,5	10	130	38	21	6	172	70	40	42 _{max}	1,37
03	1/2	48	37	45	42	8,5	10	130	38	21	6	172	70	40	42 _{max}	1,37
04	3/4	57	44	54	55	8,5	10	155	35	25	7	190	90	50	45 _{max}	2,44
05	1	55	50	50	58	8,5	10	155	35	25	7	190	100	50	45 _{max}	2,54

Curves



Materials: Aluminium body, hardened steel inner parts.

Ordering Code

PVEL **--**

Size BSP	
02	3/8
03	1/2
04	3/4
05	1

Ordering Code Example: PVEL03 = 1/2 BSP.